

MALLEABLE IRON CABLE CONNECTORS

FOR ARMORED CABLE, METAL CLAD AND FLEXIBLE METALLIC CONDUIT

APPLICATION:

- To make a 90° termination of flexible metal conduit or cable to a knockout or unthreaded slip hole in a dry location box or enclosure.

FEATURES:

- Male hub threads – NPSM.
- Provided with steel locknuts.
- Stamped steel covers.

STANDARD MATERIALS:

Malleable Iron/Steel Locknuts

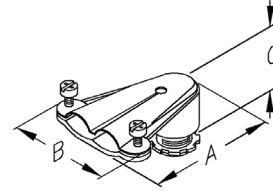
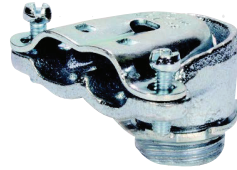
STANDARD FINISH:

Zinc Plated

CERTIFICATIONS AND COMPLIANCES



UL LISTED E309514
 UL Standard: UL514B
 NEMA FB-1
 ASTM Rated



TYPE C271

90° Duplex

CATALOG NUMBER	TRADE SIZE	KO SIZE	DIM A	DIM B	DIM C	UNIT PACK	MASTER PACK	LBS./100 PCS	UPC #
C271	3/8"	1/2"	1.188	0.438	0.875	25	250	14	52713

Please see Cable Chart for Cable Connectors on page 182.

APPLICATION:

- Connects conduit and terminates bonding conductor.

FEATURES:

- Male hub threads – NPSM.
- Provided with steel locknuts.
- Stamped steel covers.

STANDARD MATERIALS:

Malleable Iron/Steel Locknuts

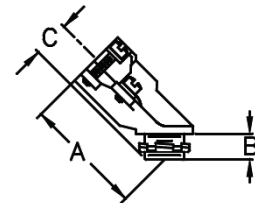
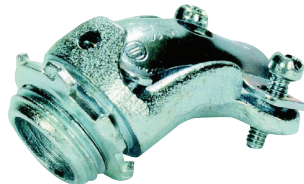
STANDARD FINISH:

Zinc Plated

CERTIFICATIONS AND COMPLIANCES



UL LISTED
E309514 3/8" and 3/4"
E198258 1/2"
 UL Standard: UL514B
 NEMA FB-1
 ASTM Rated



TYPE 315M

45° Angle

CATALOG NUMBER	TRADE SIZE	KO SIZE	DIM A	DIM B	DIM C	UNIT PACK	MASTER PACK	LBS./100 PCS	UPC #
315M	3/8"	1/2"	1.750	0.438	1.125	25	250	10	31502
316M	1/2"	1/2"	1.938	0.438	1.750	25	250	12	70885
317M	3/4"	3/4"	1.938	0.500	2.000	25	250	15	70886