

PHENOLIC INSULATING COUPLINGS

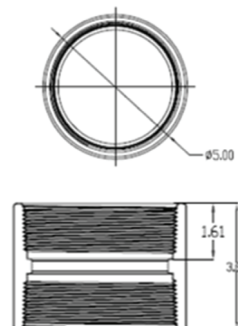
FOR THREADED RIGID CONDUIT AND IMC

APPLICATION:

- The ICC Coupling is recommended for use where high strength or resistance to moisture or acid conditions is required.

FEATURES:

- Has a substantial center shoulder, which prevents butting of the conduits, to ensure a definite break in the metallic path.
- Will not melt, soften or burn.
- Temperature rating is 150°C.
- Dielectric strength of 220 V/mil.
- Tapered threads (NPT).



STANDARD MATERIALS:

Canvas base phenolic (black)

CERTIFICATIONS AND COMPLIANCES



UL Standard: UL514B
NEMA FB-1
ASTM Rated

TYPE ICC-400

CATALOG NUMBER	TRADE SIZE	DIM A	DIM B	DIM C	UNIT PACK	MASTER PACK	LBS./100 PCS	UPC #
ICC-400	4"	5.00	1.61	3.34	1	10	66	82345

MALLEABLE IRON SPLIT COUPLINGS

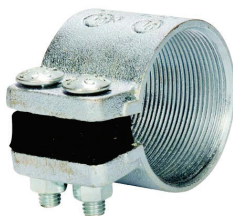
FOR THREADED RIGID CONDUIT AND IMC

APPLICATION:

- A speed union for economically joining two threaded rigid metal conduits.

FEATURES:

- A neoprene gasket provides a concrete tight seal at the joint.
- Used where conduit runs are closely spaced.
- Used where conduit is tight against wall, ceiling or other obstruction.
- Used where conduit cannot be turned.



TYPE SCC-200

STANDARD MATERIALS:

Malleable Iron

STANDARD FINISH:

Zinc Plated

CERTIFICATIONS AND COMPLIANCES



UL LISTED E198258
UL Standard: UL514B
NEMA FB-1
ASTM Rated

CATALOG NUMBER	TRADE SIZE	DIM A	DIM B	DIM C	UNIT PACK	MASTER PACK	LBS./100 PCS	UPC #
SCC-50	1/2"	2.000	1.250	1.250	10	100	34	70795
SCC-75	3/4"	2.313	1.250	1.500	10	100	40	70796
SCC-100	1"	2.625	1.625	1.813	10	40	60	70797
SCC-125	1-1/4"	3.063	1.625	2.188	5	20	75	70798
SCC-150	1-1/2"	3.313	1.938	2.438	5	20	113	70799
SCC-200	2"	3.813	2.000	2.875	5	20	113	70800
SCC-250	2-1/2"	4.625	3.063	3.563	2	20	275	70801
SCC-300	3"	5.313	3.125	4.125	2	20	300	70802
SCC-350	3-1/2"	6.063	3.250	4.813	1	5	425	70803
SCC-400	4"	6.563	3.438	5.375	1	5	500	70804
SCC-500	5"	8.063	3.875	6.563	—	1	900	70805
SCC-600	6"	9.250	4.188	7.625	—	1	1300	70806

1/2" and 3/4" furnished with one screw
1" through 6" furnished with two screws

