

PIPE PLUGS

FOR THREADED RIGID CONDUIT AND IMC

APPLICATION

To close up a taped hole or hub.

FEATURES

→ Threaded (NPT)

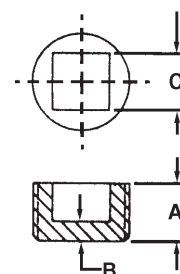
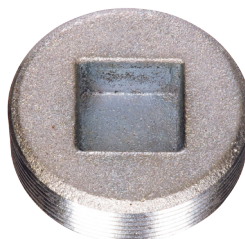
STANDARD MATERIALS

Malleable Iron

STANDARD FINISH

Zinc Plated

Pipe Plugs



TYPE P10

| CATALOG NUMBER | TRADE SIZE | DIM A | DIM B | DIM C | UNIT PACK | MASTER PACK | LBS. / 100 PCS. | UPC # |
|----------------|------------|-------|-------|-------|-----------|-------------|-----------------|-------|
| P10 | 1/2" | 0.560 | 0.160 | 0.382 | - | 100 | 7 | 14101 |
| P11 | 3/4" | 0.630 | 0.180 | 0.508 | - | 100 | 12 | 14111 |
| P12 | 1" | 0.750 | 0.200 | 0.508 | - | 100 | 21 | 14121 |
| P13 | 1-1/4" | 0.800 | 0.759 | 0.220 | - | 100 | 33 | 14131 |
| P14 | 1-1/2" | 0.830 | 0.759 | 0.240 | - | 25 | 45 | 14141 |
| P15 | 2" | 0.880 | 0.884 | 0.260 | - | 25 | 78 | 14151 |
| P16 | 2-1/2" | 1.070 | 1.137 | 0.290 | - | 10 | 148 | 14161 |
| P17 | 3" | 1.130 | 1.391 | 0.310 | - | 10 | 219 | 14171 |
| P18 | 3-1/2" | 1.180 | 1.518 | 0.340 | - | 5 | 336 | 14181 |
| P19 | 4" | 1.220 | 2.022 | 0.370 | - | 5 | 378 | 14191 |
| P20 | 5" | 1.310 | 2.275 | 0.400 | - | 5 | 540 | 14201 |
| P21 | 6" | 1.375 | 2.530 | 0.437 | - | 5 | 780 | 14211 |

Square Head Plugs are available upon request. Please call factory for pricing and availability.

APPLICATION

To close up a taped hole or hub.

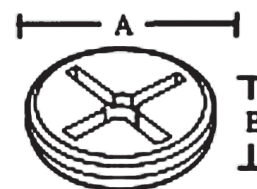
FEATURES

→ Threaded (NPT)

STANDARD MATERIALS

Zinc Die Cast

Slotted Plugs



TYPE P3

| CATALOG NUMBER | TRADE SIZE | DIM A | DIM B | UNIT PACK | MASTER PACK | LBS. / 100 PCS. | UPC # |
|----------------|------------|-------|-------|-----------|-------------|-----------------|-------|
| P1 | 1/2" | 0.560 | 0.160 | 100 | 1000 | 1 | 14012 |
| P2 | 3/4" | 0.630 | 0.180 | 100 | 1000 | 2 | 14022 |
| P3 | 1" | 0.750 | 0.200 | 100 | 1000 | 4 | 14032 |