

ALUMINUM SERVICE ENTRANCE HEADS

FOR THREADED RIGID CONDUIT, IMC AND EMT CONDUIT

APPLICATION

Combination entrance cap to fit 2 - 2 1/2" mast and has 1 1/4 - 2" cap.

FEATURES

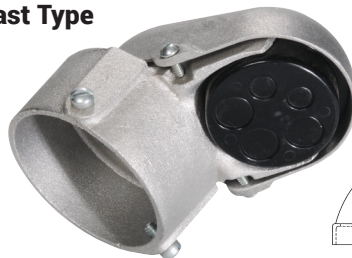
→ Set-screw type.

STANDARD MATERIALS

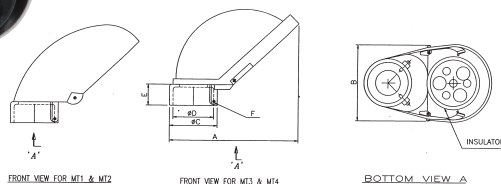
Aluminum
Phenolic Insulator



Mast Type



TYPE 3032



CATALOG NUMBER	TRADE SIZE	DIM A	DIM B	DIM C	DIM D	DIM E	SET SCREW SIZE 'F' (2 NOS.)	CONDUIT SIZE	INSULATOR CAP SIZE	UNIT PACK	MASTER PACK	LBS. / 100 PCS.	UPC #
3032	2"	4.7595	3.4396	2.6713	2.4586	1.4026	1/4 - 20 x 5/8	2	1-1/4	-	10	80	30325
3033	2-1/2"	5.3032	3.4120	3.2150	2.9708	1.5602	1/4 - 20 x 1/2	2-1/2	1-1/4	-	10	90	30335
3035	2-1/2"	6.5995	4.6256	3.1441	2.9471	1.1820	1/4 - 20 x 5/8	2-1/2	2	-	5	155	30355

ALUMINUM SERVICE ENTRANCE ELLS WITH COVER AND GASKET

FOR THREADED RIGID CONDUIT AND IMC

APPLICATION

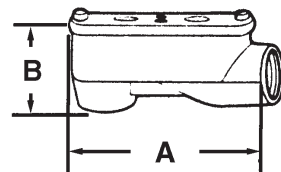
To provide access to the inside of a service raceway, for wire pulling, where the raceway changes direction. Material finish is metallic gray.

FEATURES

→ Assembled with fiber gasket and aluminum die cast cover

STANDARD MATERIALS

Aluminum



TYPE 412

CATALOG NUMBER	TRADE SIZE	DIM A	DIM B	UNIT PACK	MASTER PACK	LBS. / 100 PCS.	UPC #
412	1/2"	3.79	1.76	10	50	26	41250
413	3/4"	4.02	1.99	10	50	31	41350
414	1"	4.94	2.50	5	25	54	41450
415	1-1/4"	5.60	2.72	-	10	105	41550
415XL*	1-1/4"	7.91	2.75	-	10	140	41551
416	1-1/2"	6.79	3.10	-	10	130	41650
417	2"	7.74	3.88	-	5	170	41750

*Extra Long