

KNOCK-OUT SEALS

APPLICATION

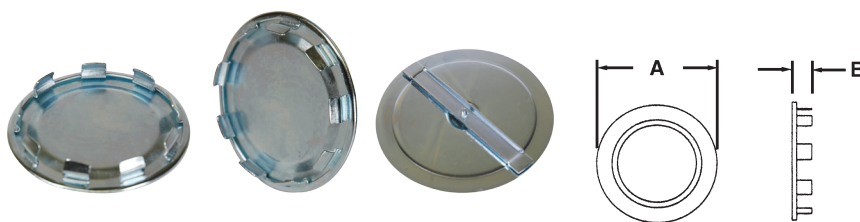
To close unused opening or knockout in sheet metal box, enclosure or cabinet.

STANDARD MATERIALS

Steel

STANDARD FINISH

Zinc Plated



TYPE SS50

CATALOG NUMBER	TRADE SIZE	DIM A	DIM B	UNIT PACK	MASTER PACK	LBS. / 100 PCS.	UPC #
SS50	1/2"	1.070	0.365	200	2000	1	22507
SS52	3/4"	1.235	0.310	100	1000	2	22527
SS54	1"	1.480	0.335	100	1000	3	22547
SS56	1-1/4"	1.800	0.310	50	500	4	22567
SS58	1-1/2"	2.215	0.365	50	500	5	22587
SS60	2"	2.675	0.360	25	250	7	22607
*SS62	2-1/2"	2.975	0.410	10	100	15	22627
*SS64	3"	4.500	0.465	10	50	40	90147
*SS66	3-1/2"	5.000	0.487	10	50	50	90148
*SS68	4"	5.500	0.4962	10	50	50	90149

* Three-Piece Knock-Out Seals