

# MALLEABLE IRON/HOT DIPPED GALVANIZED JUNCTION CONDUIT OUTLET BOXES

## FOR THREADED RIGID CONDUIT AND IMC

### APPLICATION:

- JBDX outlet boxes are installed in threaded rigid conduit systems to:
  - Act as junction boxes.
  - Act as pull outlets.
  - Accept round base wiring devices and covers intended for use on 4" outlet boxes.
  - Mount enclosed and gasketed lighting fixtures: ARB fixture hangers.

### FEATURES:

- Surface mounting; flush mounting can be obtained by nailing box to concrete form through mounting lugs.
- Drilled mounting lugs.
- Four drilled and tapped conduit bosses spaced 90° apart on sides.

### STANDARD MATERIALS:

Malleable Iron

### STANDARD FINISH:

Hot Dipped Galvanized/Zinc Plated



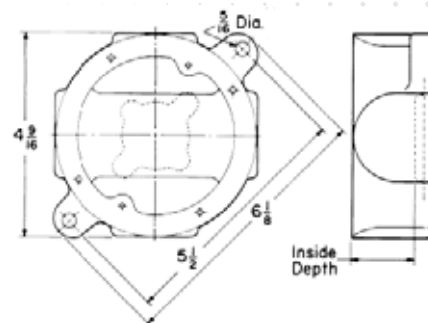
### OPTIONAL FINISH:

For Malleable Iron/Zinc Plated, please remove the "G" suffix from Hot Dipped Galvanized catalog number and see page 42.

### CERTIFICATIONS AND COMPLIANCES



**UL LISTED E198259**  
UL Standard: UL514B  
NEMA FB-1  
ASTM Rated



## TYPE JBDX-75G

For Threaded Rigid Conduit and IMC

CATALOG NUMBER	TRADE SIZE	INSIDE DEPTH	DIM A	DIM B	DIM C	UNIT PACK	MASTER PACK	LBS./PER 100	UPC#
JBDX-50G	1/2"	2.06	4.563	5.55	6.125	1	5	315	89232
JBDX-75G	3/4"	2.06	4.563	5.55	6.125	1	5	305	89237
JBDX-100G	1"	2.06	4.563	5.55	6.125	1	5	285	89242

# MALLEABLE IRON/HOT DIPPED GALVANIZED JUNCTION CONDUIT OUTLET BOX COVERS AND GASKET

### APPLICATION:

- Furnished with screws.
- When used with gasket provides raintight fit.

### STANDARD MATERIALS:

- Cover: Malleable Iron
- Gasket: Neoprene

### STANDARD FINISH:

Hot Dipped Galvanized/Zinc Plated



### OPTIONAL FINISH:

For Malleable Iron/Zinc Plated, please remove the "G" suffix from Hot Dipped Galvanized catalog number and see page 42.

### CERTIFICATIONS AND COMPLIANCES



**UL LISTED E198259**  
UL Standard: UL514B  
NEMA FB-1  
ASTM Rated



CATALOG NUMBER	TYPE	UNIT PACK	MASTER PACK	LBS./PER 100	UPC#
JBKBG	BLANK	5	50	90	89247
JBDXG	GASKET	20	200	5	89250

